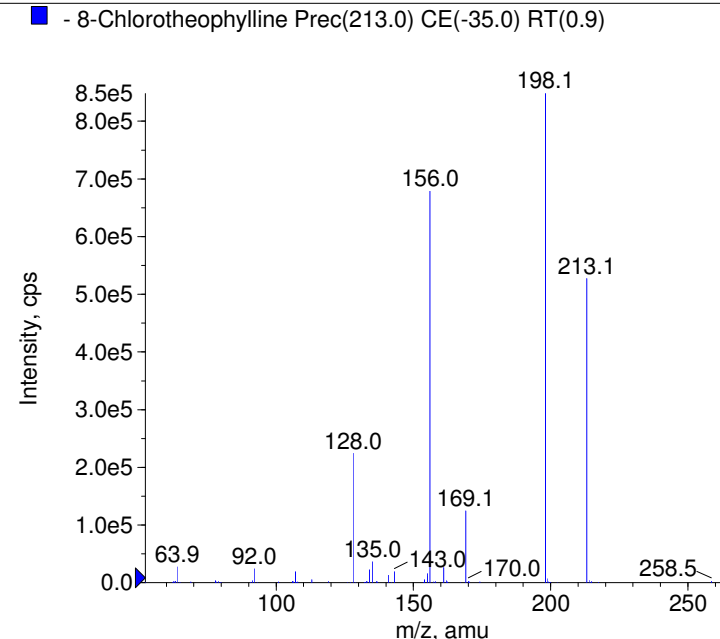
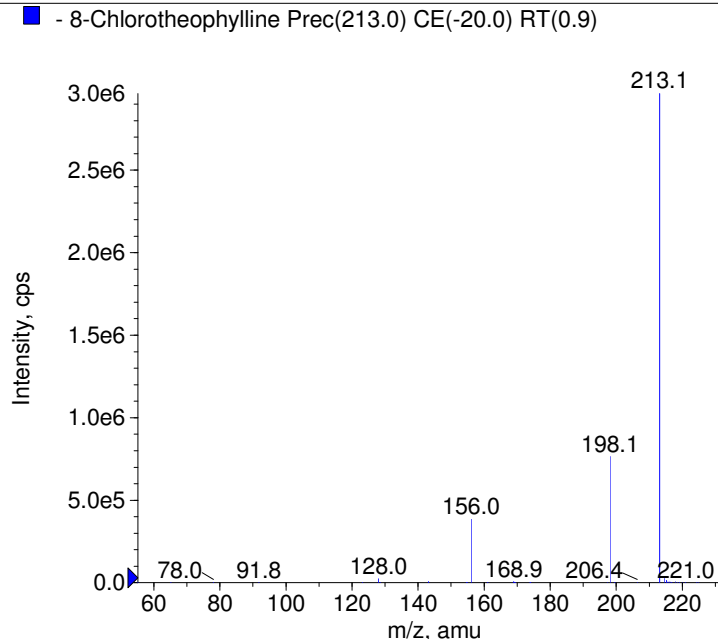
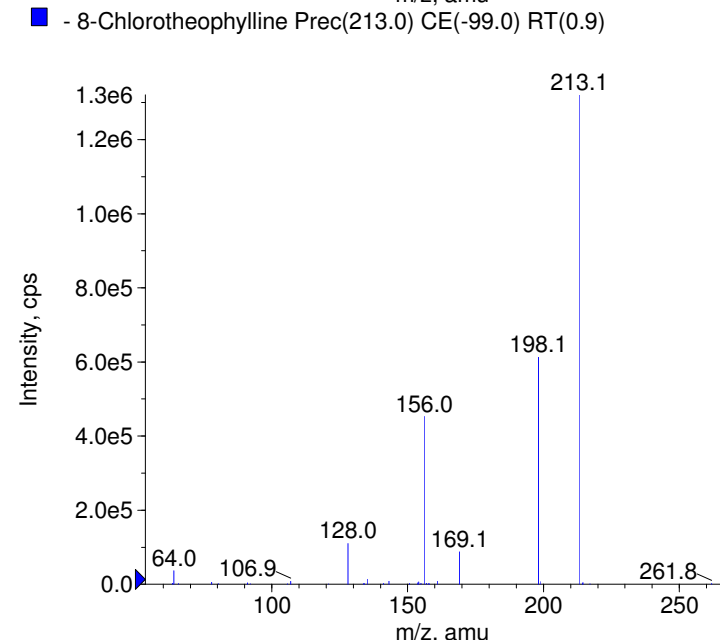
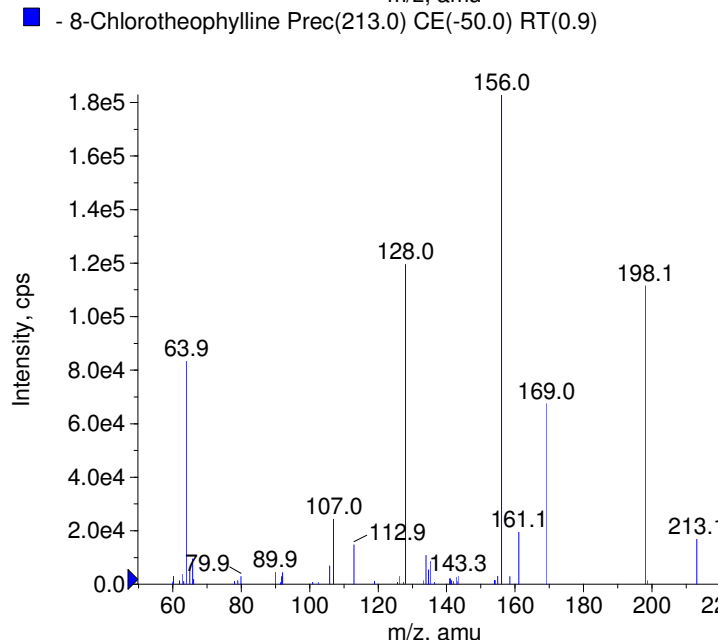


Compound Name: 8-Chlorotheophylline
 Synonyms:
 Formula: C7H7ClN4O2
 CAS Number: 85-18-7
 Molecular weight(amu): 214.0257
 Compound Class: analeptic
 Compound ID: C114
 User Value: 0.0000
 Keyword:
 Internal Standard: No
 Comment1:

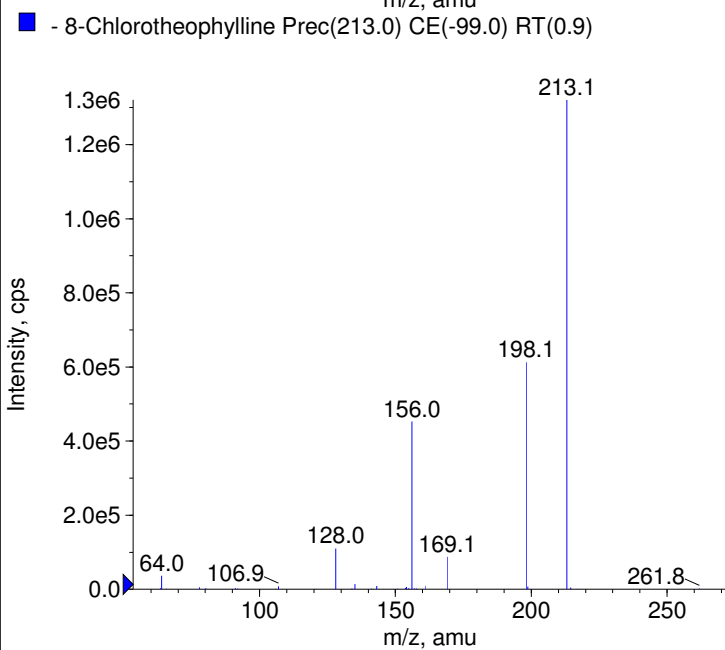
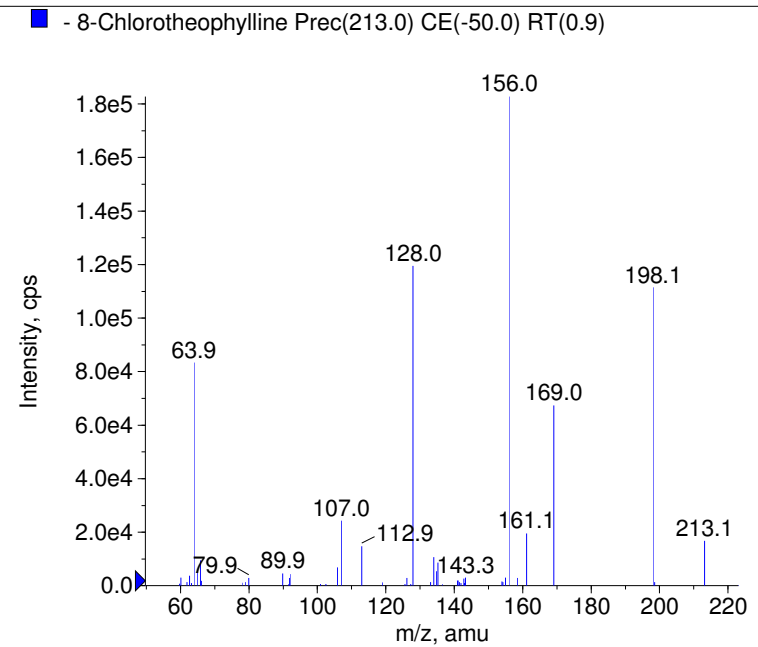
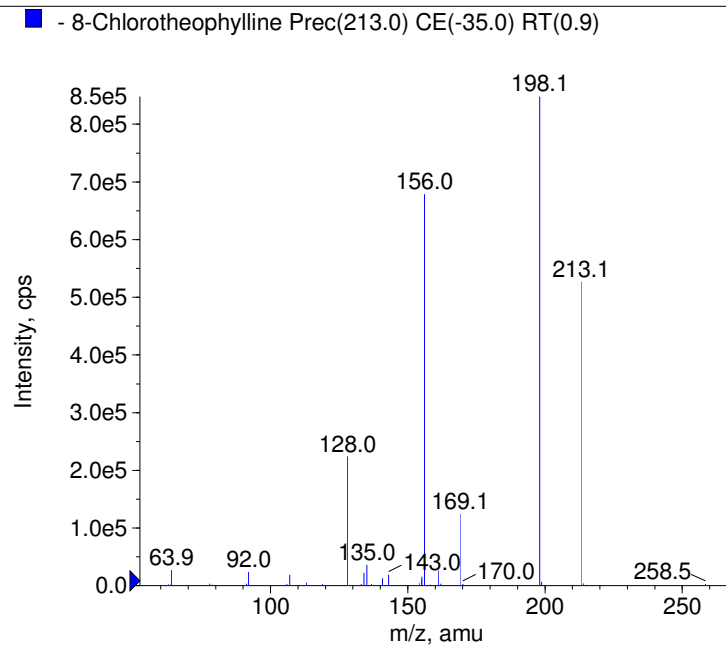
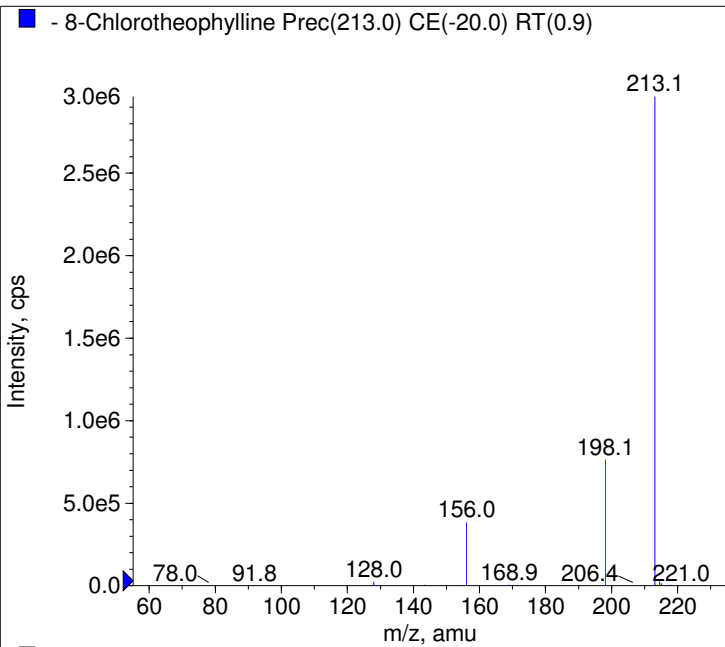


Instrument Model: QTrap
 Ion Source: Turbo Spray
 Polarity: Negative
 Scan Type: EPI
 1st Precursor m/z: 213.0000
 Collision Energy1(V): -20.0000
 Charge State1: -1
 CAD Gas Type:
 CAD Gas Value: Level 4
 Retention Time(min): 0.87
 Resolution: unit
 Comment2:
 Comment3:



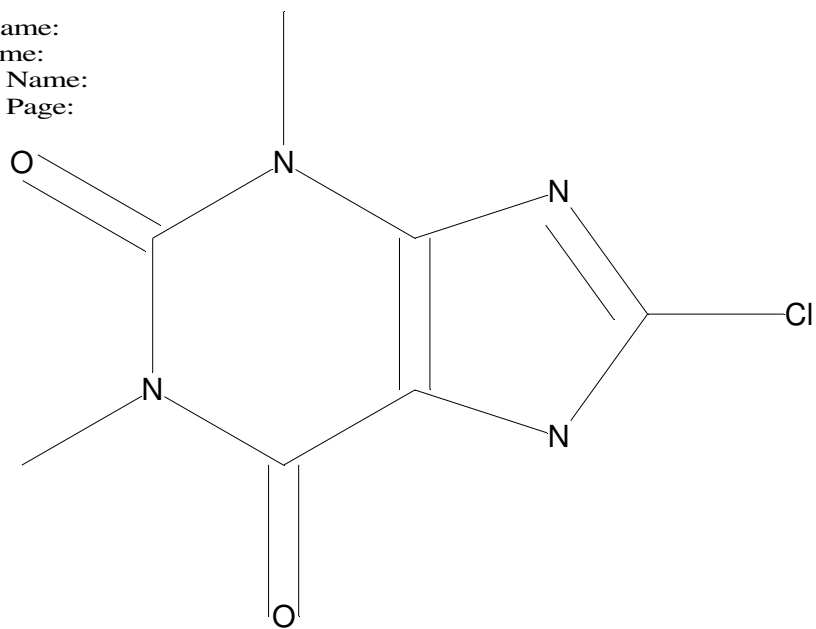
© Copyright 2007 by
 W. Weinmann
 S. Dresen
www.chemicalsoft.de

“CE (99.0)”: CE spread 35+/-15 eV



C7H7N4O2Cl

Chemist Name:
Project Name:
Workbook Name:
Workbook Page:



© Copyright 2007 by
W. Weinmann
S. Dresen
www.chemicalsoft.de

“CE (99.0)“: CE spread 35+/-15 eV