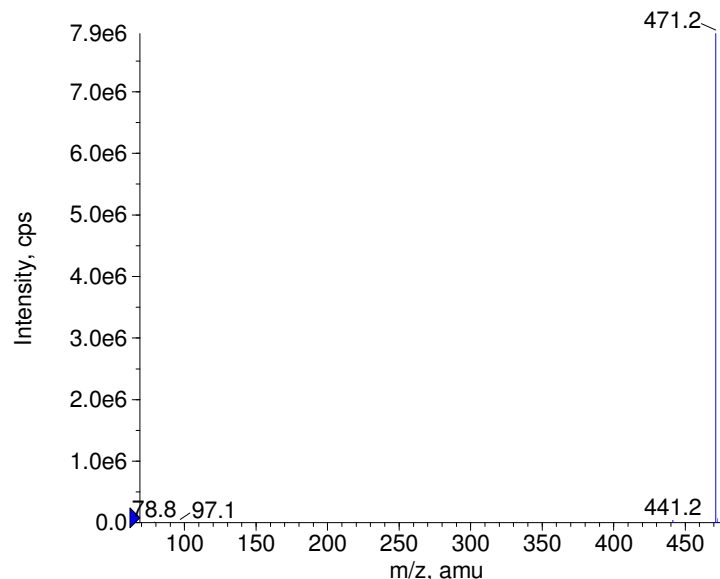
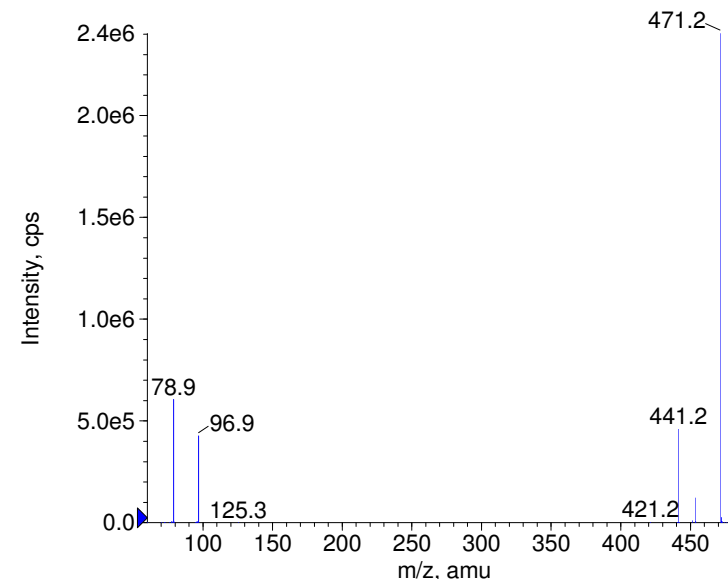


Compound Name: Betamethasone 21-phosphate
Synonyms:
Formula: C22H30FO8P
CAS Number: 360-63-4
Molecular weight(amu):472.1662
Compound Class: local corticoid
Compound ID: B181
User Value: 0.0000
Keyword:
Internal Standard: No
Comment1:

■ - Betamethasone 21-phosphate Prec(471.0) CE(-20.0) RT(1.0)

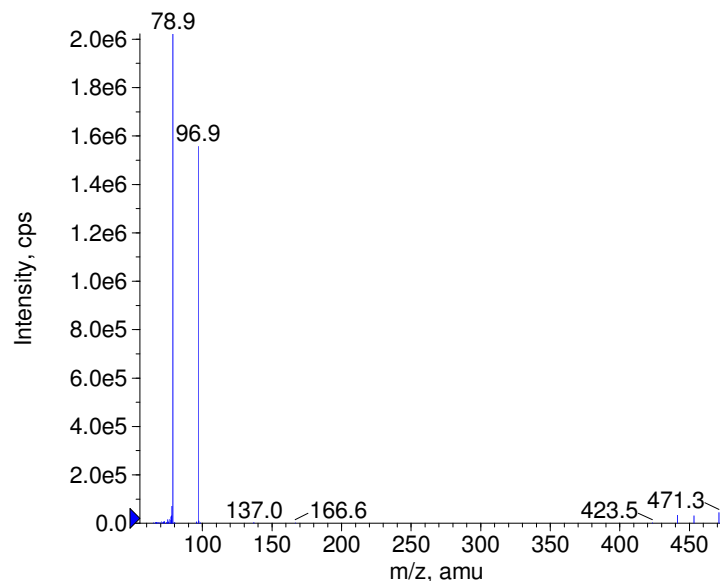


■ - Betamethasone 21-phosphate Prec(471.0) CE(-35.0) RT(1.0)

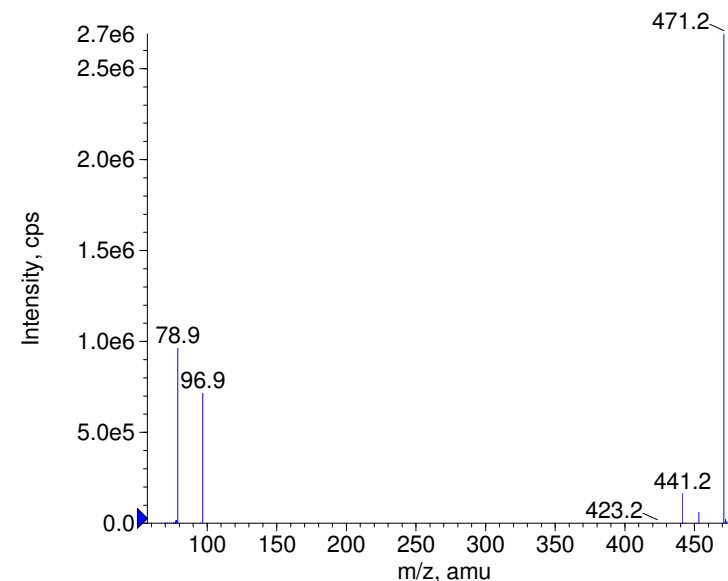


Instrument Model: QTrap
Ion Source: Turbo Spray
Polarity: Negative
Scan Type: EPI
1st Precursor m/z: 471.0000
Collision Energy1(V): -20.0000
Charge State1: -1
CAD Gas Type:
CAD Gas Value: Level 4
Retention Time(min): 1.02
Resolution: unit
Comment2:
Comment3:

■ - Betamethasone 21-phosphate Prec(471.0) CE(-50.0) RT(1.0)



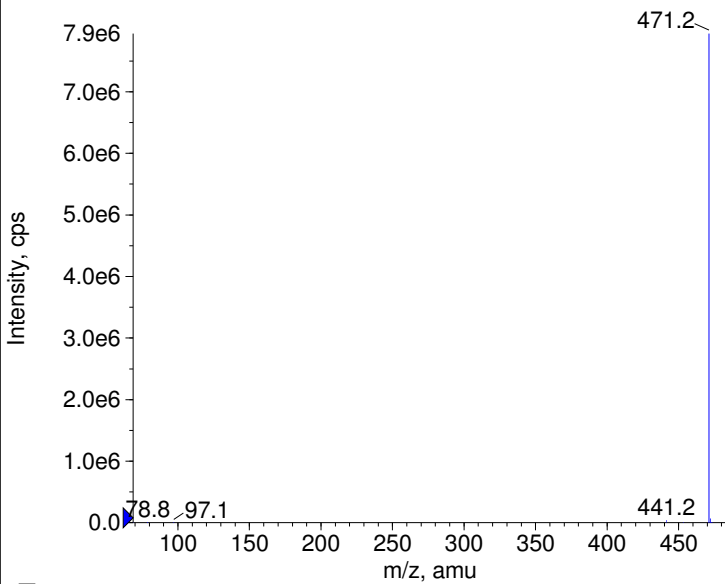
■ - Betamethasone 21-phosphate Prec(471.0) CE(-99.0) RT(1.1)



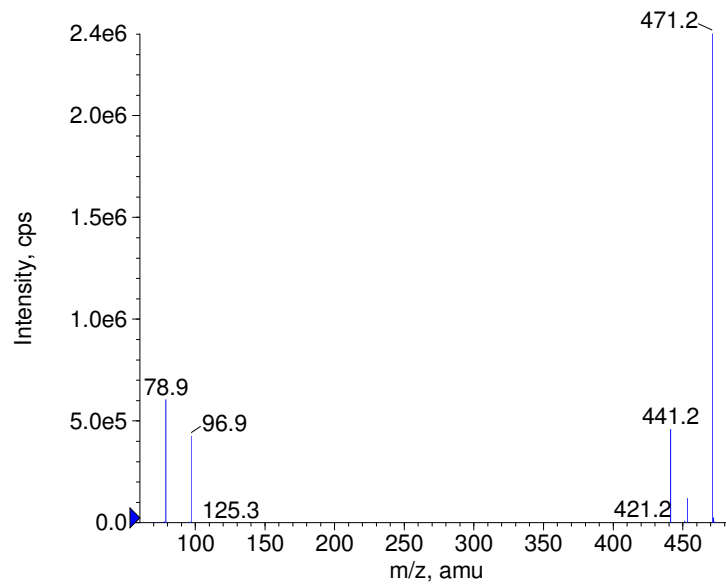
© Copyright 2007 by
W. Weinmann
S. Dresen
www.chemicalsoft.de

“CE (99.0)”: CE spread 35+/-15 eV

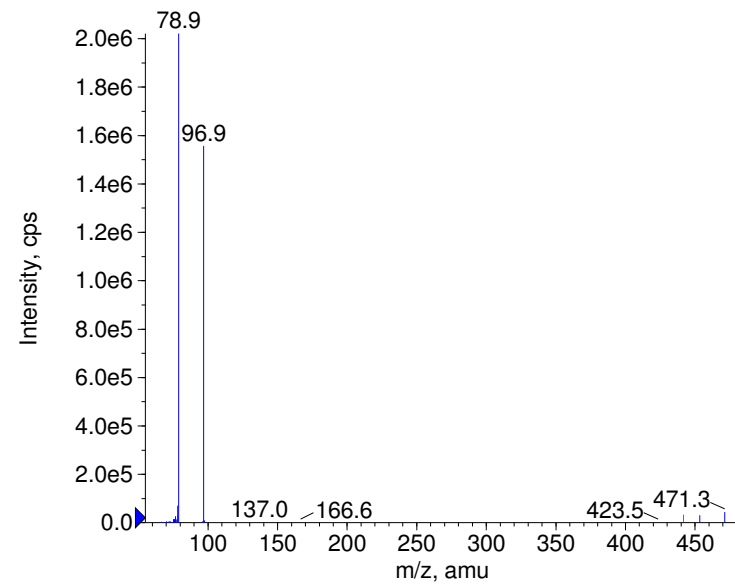
■ - Betamethasone 21-phosphate Prec(471.0) CE(-20.0) RT(1.0)



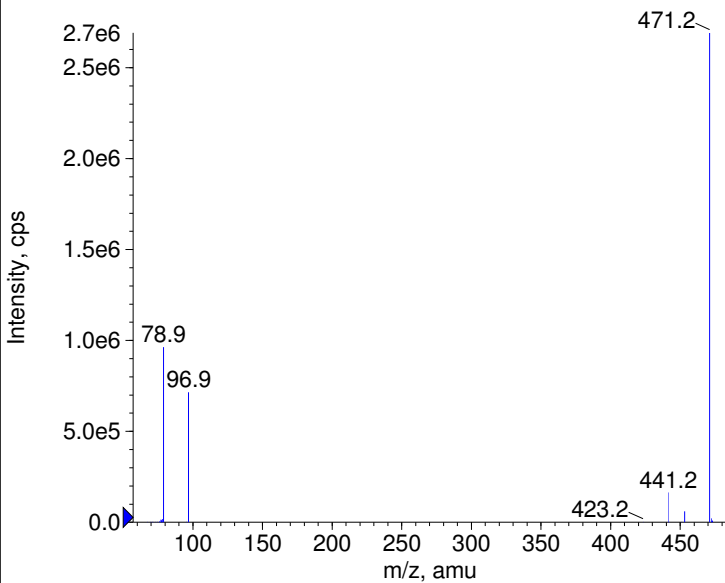
■ - Betamethasone 21-phosphate Prec(471.0) CE(-35.0) RT(1.0)



■ - Betamethasone 21-phosphate Prec(471.0) CE(-50.0) RT(1.0)

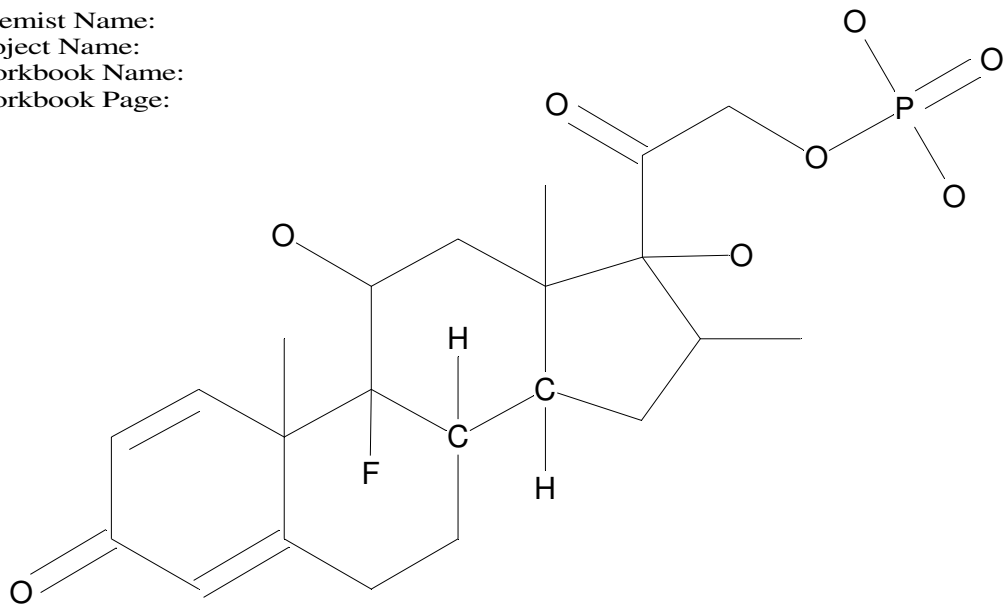


■ - Betamethasone 21-phosphate Prec(471.0) CE(-99.0) RT(1.1)



C22H30O8FP

Chemist Name:
Project Name:
Workbook Name:
Workbook Page:



© Copyright 2007 by
W. Weinmann
S. Dresen
www.chemicalsoft.de

“CE (99.0)“: CE spread 35+/-15 eV