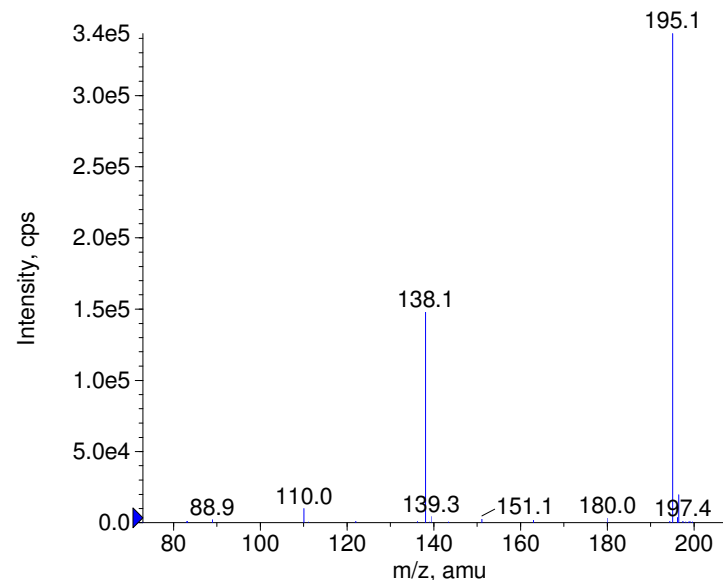


Compound Name: Caffeine
Synonyms:
Formula: C₈H₁₀N₄O₂
CAS Number: 58-08-2
Molecular weight(amu): 194.0803
Compound Class: analeptic
Compound ID: C042
User Value: 0.0000
Keyword:
Internal Standard: No
Comment1:

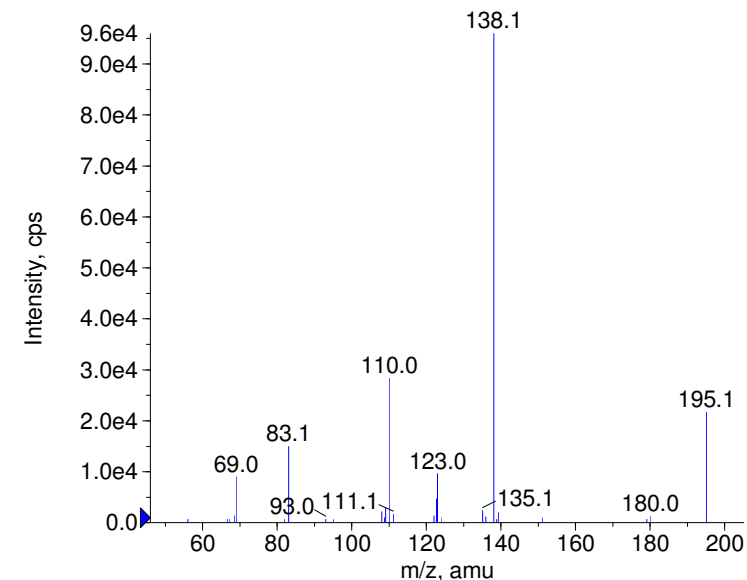
Instrument Model: QTrap
Ion Source: Turbo Spray
Polarity: Positive
Scan Type: EPI
1st Precursor m/z: 195.0000
Collision Energy1(V): 20.0000
Charge State1: 1
CAD Gas Type:
CAD Gas Value: Level 4
Retention Time(min): 0.71
Resolution: unit
Comment2:
Comment3:

© Copyright 2007 by
W. Weinmann
S. Dresen
www.chemicalsoft.de

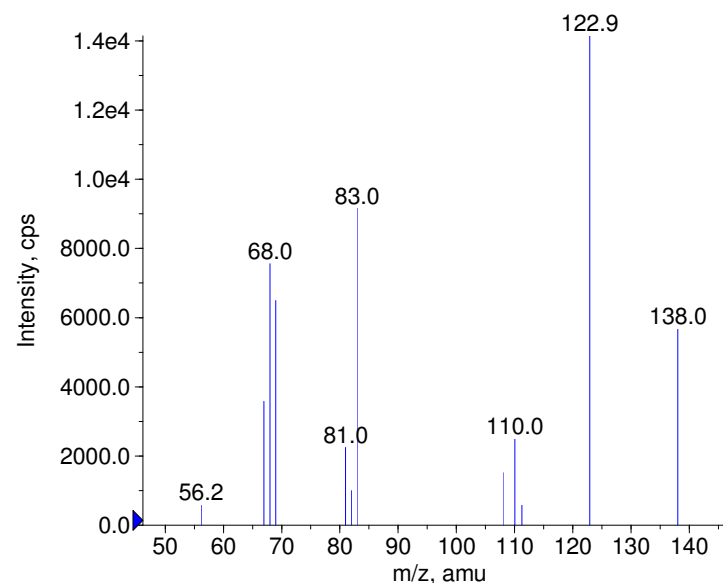
+ Caffeine Prec(195.0) CE(20.0) RT(0.7)



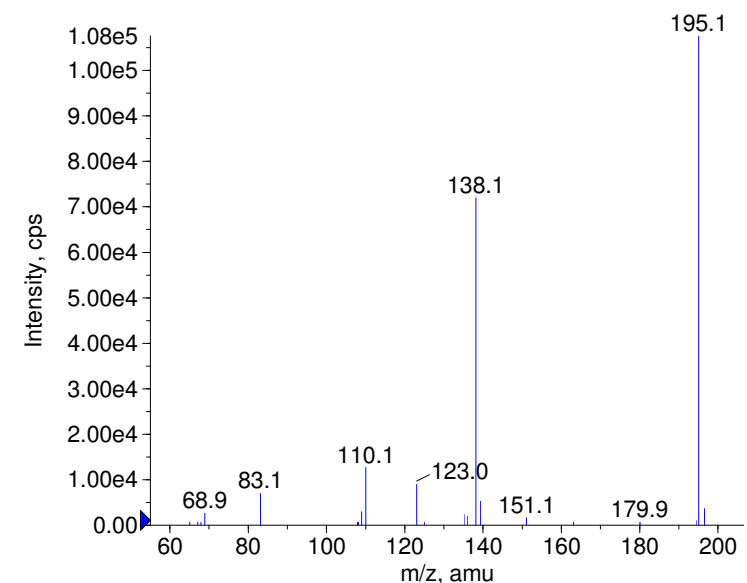
+ Caffeine Prec(195.0) CE(35.0) RT(0.7)



+ Caffeine Prec(195.0) CE(50.0) RT(0.7)

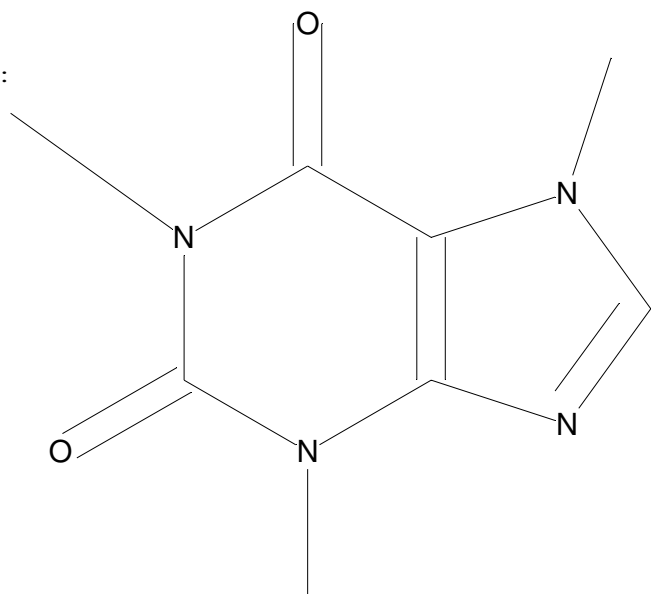


+ Caffeine Prec(195.0) CE(99.0) RT(0.8)



C8H10N4O2

Chemist Name:
Project Name:
Workbook Name:
Workbook Page:



© Copyright 2007 by
W. Weinmann
S. Dresen
www.chemicalsoft.de