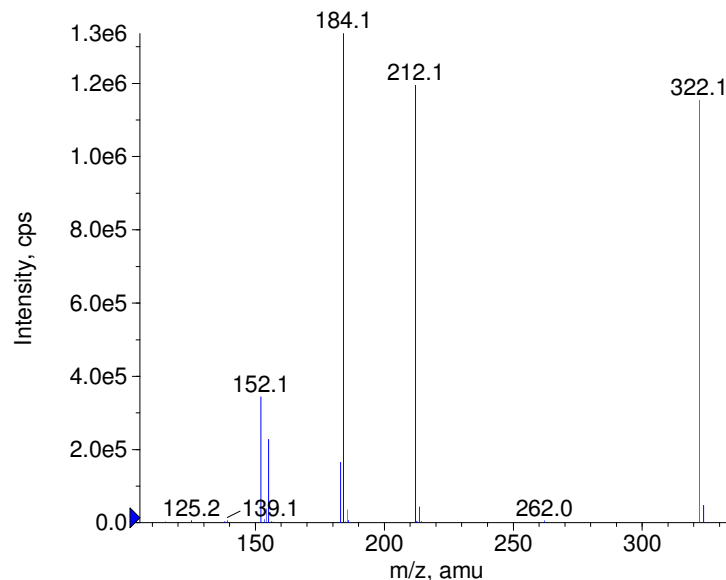
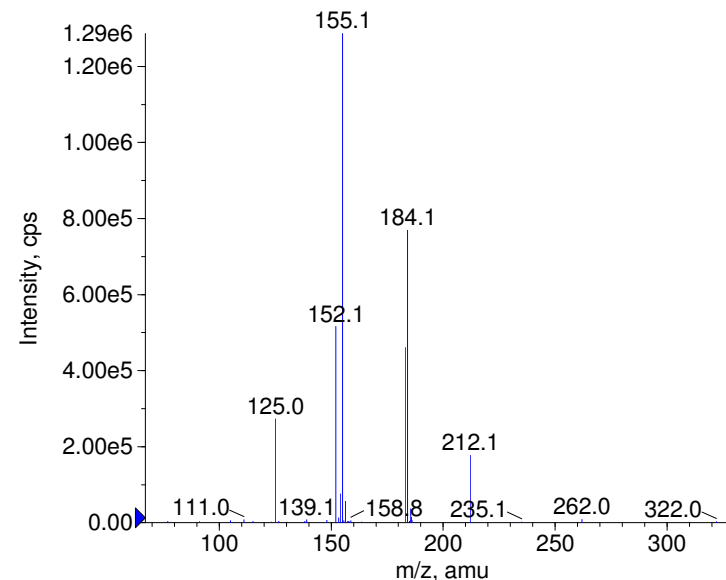


Compound Name: Clopidogrel  
 Synonyms:  
 Formula: C16H16ClNO2S  
 CAS Number: 113665-84-2  
 Molecular weight(amu): 321.0590  
 Compound Class: platelet aggregation inhibitor  
 Compound ID: C371  
 User Value: 0.0000  
 Keyword:  
 Internal Standard: No  
 Comment1:

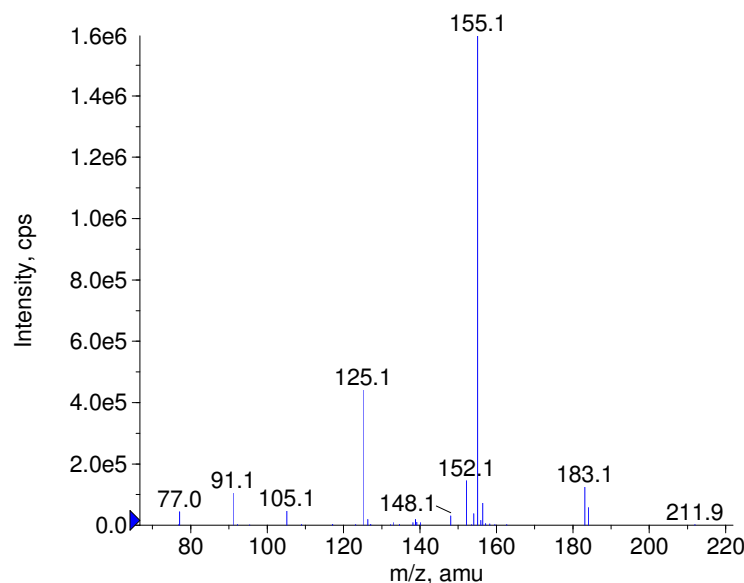
+ Clopidogrel Prec(322.0) CE(20.0) RT(3.1)



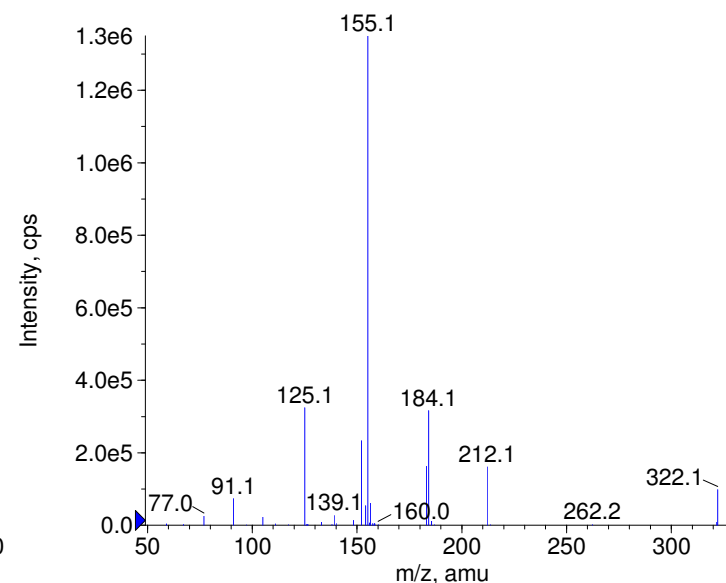
+ Clopidogrel Prec(322.0) CE(35.0) RT(3.1)



+ Clopidogrel Prec(322.0) CE(50.0) RT(3.1)



+ Clopidogrel Prec(322.0) CE(99.0) RT(3.1)



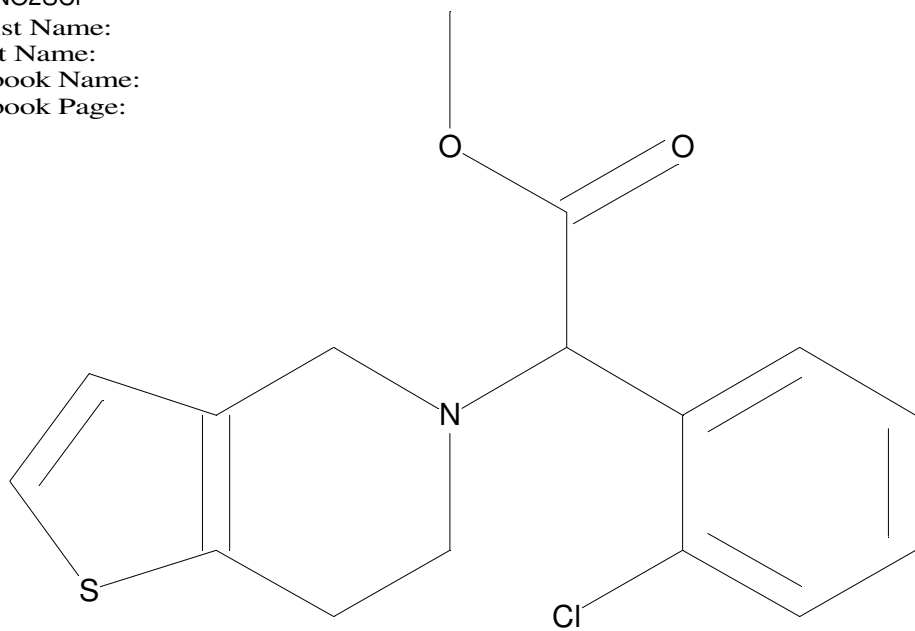
Instrument Model: QTrap  
 Ion Source: Turbo Spray  
 Polarity: Positive  
 Scan Type: EPI  
 1st Precursor m/z: 322.0000  
 Collision Energy1(V): 20.0000  
 Charge State1: 1  
 CAD Gas Type:  
 CAD Gas Value: Level 4  
 Retention Time(min): 3.09  
 Resolution: unit  
 Comment2:  
 Comment3:

© Copyright 2007 by  
 W. Weinmann  
 S. Dresen  
[www.chemicalsoft.de](http://www.chemicalsoft.de)

“CE (99.0)”: CE spread 35+/-15 eV

C16H16NO2SCI

Chemist Name:  
Project Name:  
Workbook Name:  
Workbook Page:



© Copyright 2007 by  
W. Weinmann  
S. Dresen  
[www.chemicalsoft.de](http://www.chemicalsoft.de)

“CE (99.0)“: CE spread 35+/-15 eV