

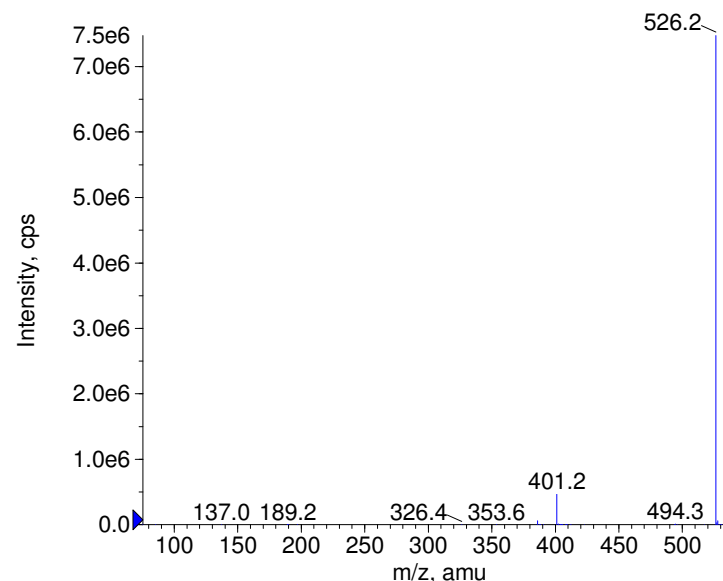
Compound Name: Gliquidone
 Synonyms:
 Formula: C27H33N3O6S
 CAS Number: 33342-05-1
 Molecular weight(amu): 527.2089
 Compound Class: antidiabetic
 Compound ID:
 User Value: 0.0000
 Keyword:
 Internal Standard: No
 Comment1:

Instrument Model: QTrap
 Ion Source: Turbo Spray
 Polarity: Negative
 Scan Type: EPI
 1st Precursor m/z: 526.0000
 Collision Energy1(V): -20.0000
 Charge State1: -1
 CAD Gas Type:
 CAD Gas Value: Level 4
 Retention Time(min): 1.80
 Resolution: unit
 Comment2:
 Comment3:

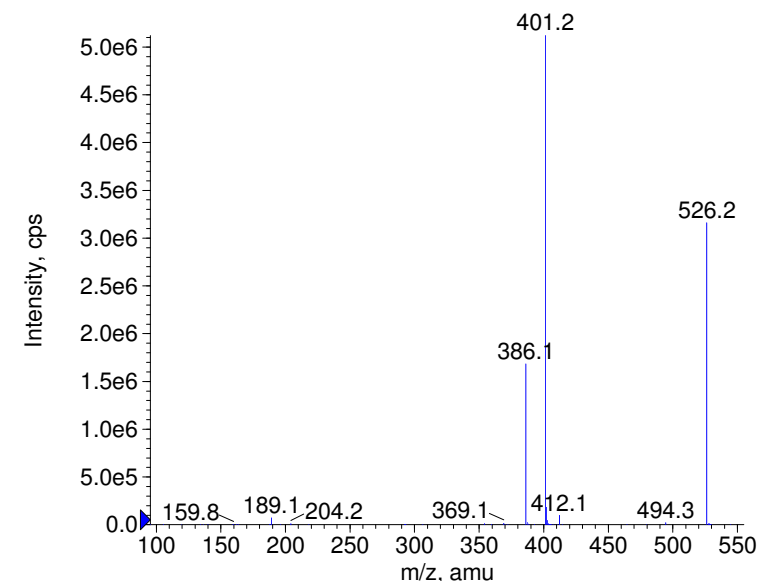
© Copyright 2007 by
 W. Weinmann
 S. Dresen
www.chemicalsoft.de

“CE (99.0)”: CE spread 35+/-15 eV

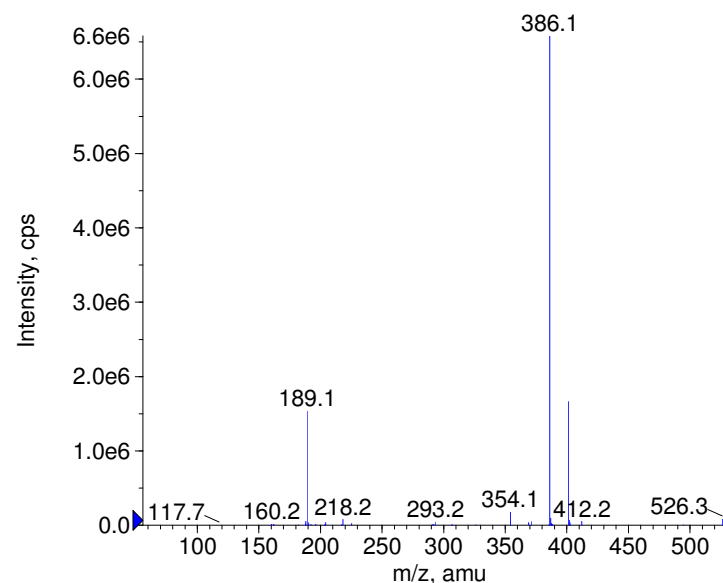
■ - Gliquidone Prec(526.0) CE(-20.0) RT(1.8)



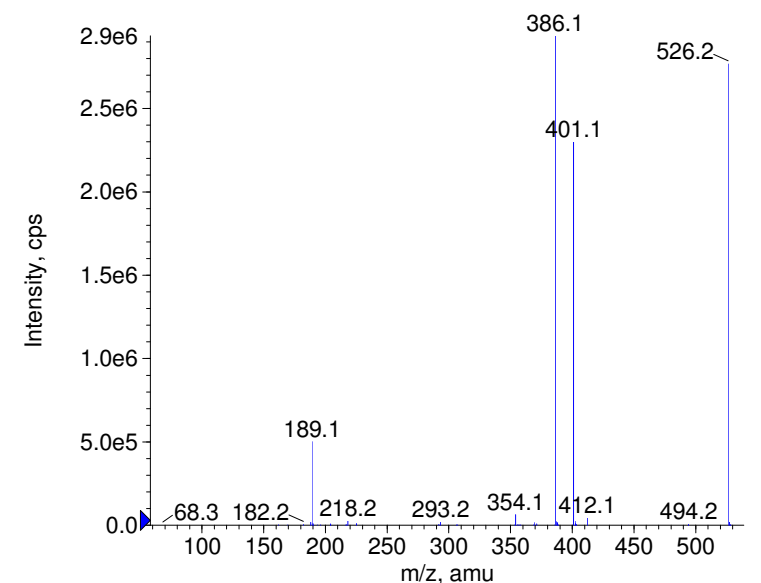
■ - Gliquidone Prec(526.0) CE(-35.0) RT(1.8)

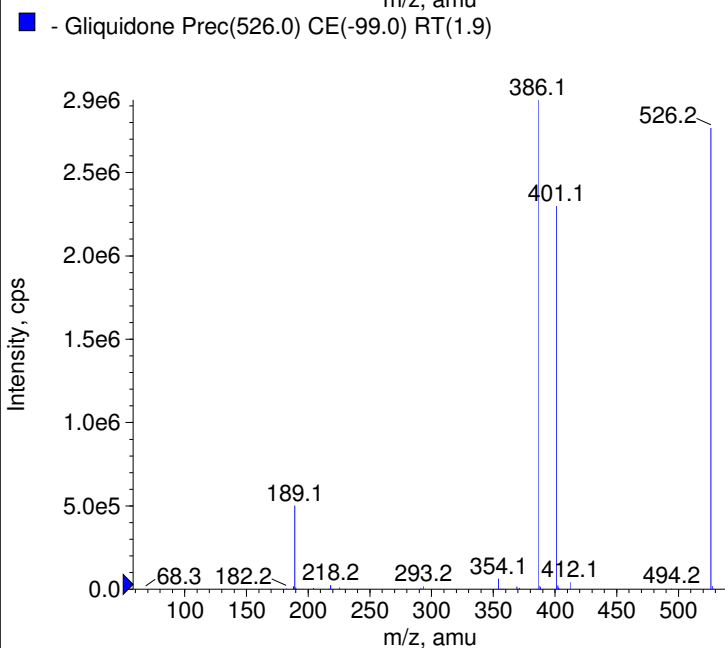
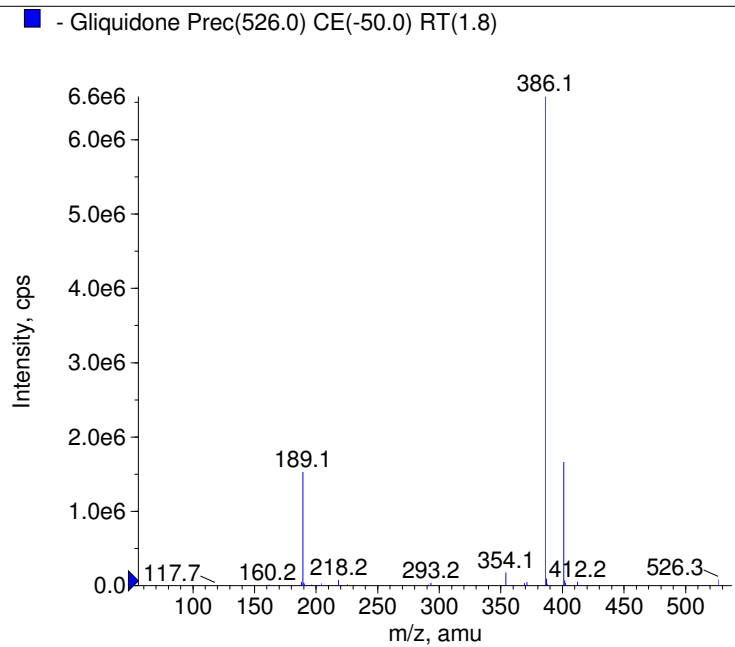
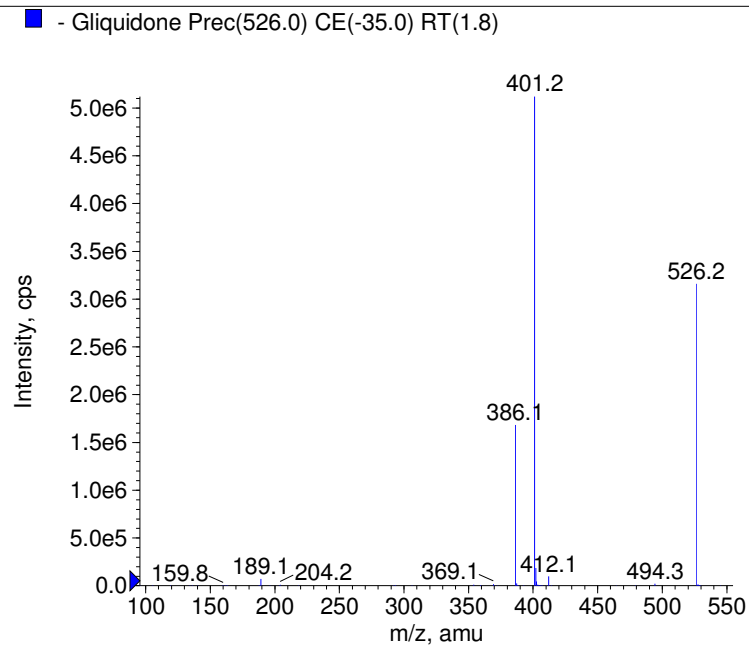
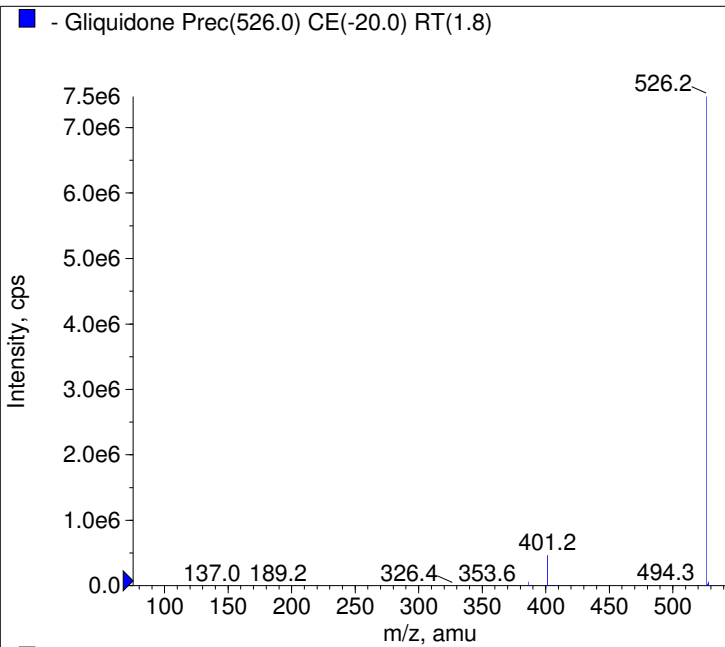


■ - Gliquidone Prec(526.0) CE(-50.0) RT(1.8)



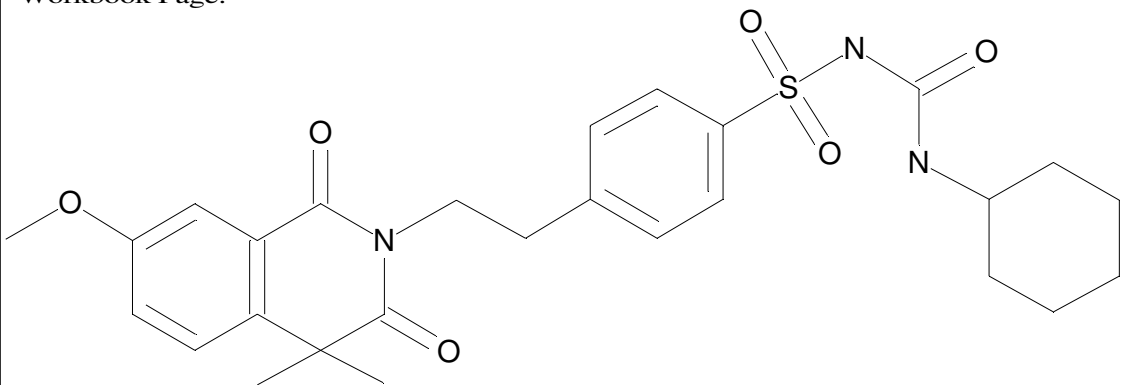
■ - Gliquidone Prec(526.0) CE(-99.0) RT(1.9)





C27H33N3O6S

Chemist Name:
Project Name:
Workbook Name:
Workbook Page:



© Copyright 2007 by
W. Weinmann
S. Dresen
www.chemicalsoft.de

“CE (99.0)“: CE spread 35+/-15 eV