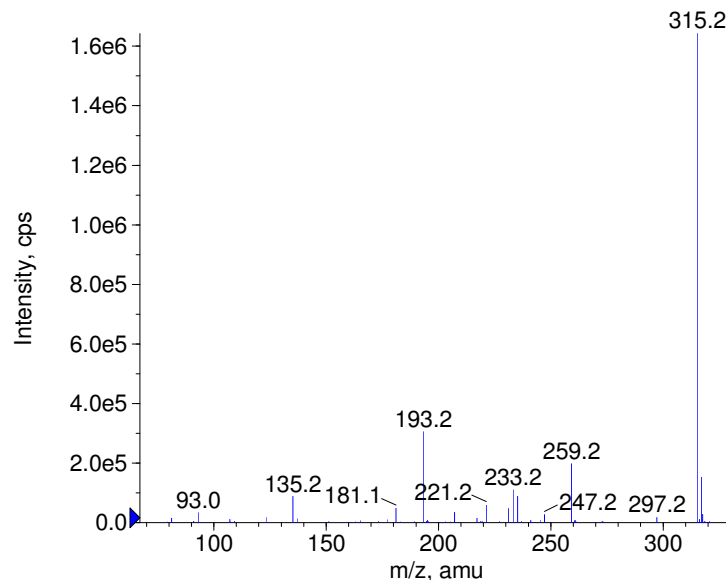
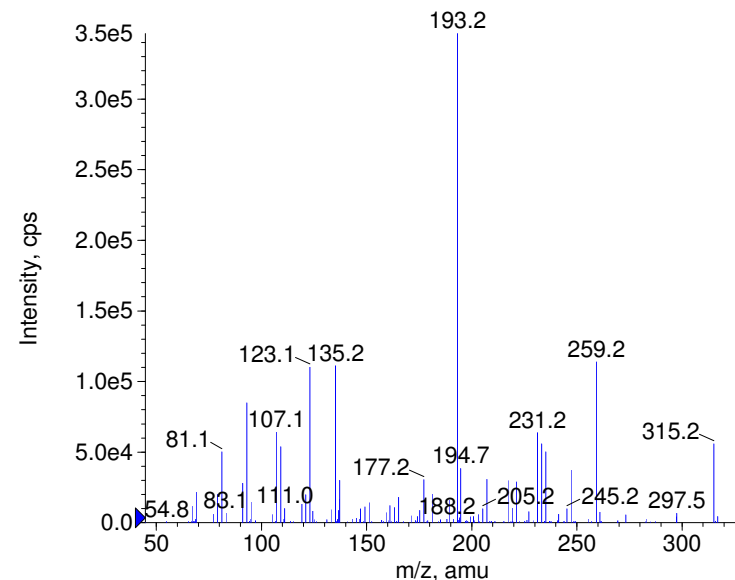


Compound Name: THC
 Synonyms:
 Formula: C₂₁H₃₀O₂
 CAS Number: 7683-36-5
 Molecular weight(amu): 314.2245
 Compound Class: illegal drug
 Compound ID:
 User Value: 0.0000
 Keyword:
 Internal Standard: No
 Comment1:

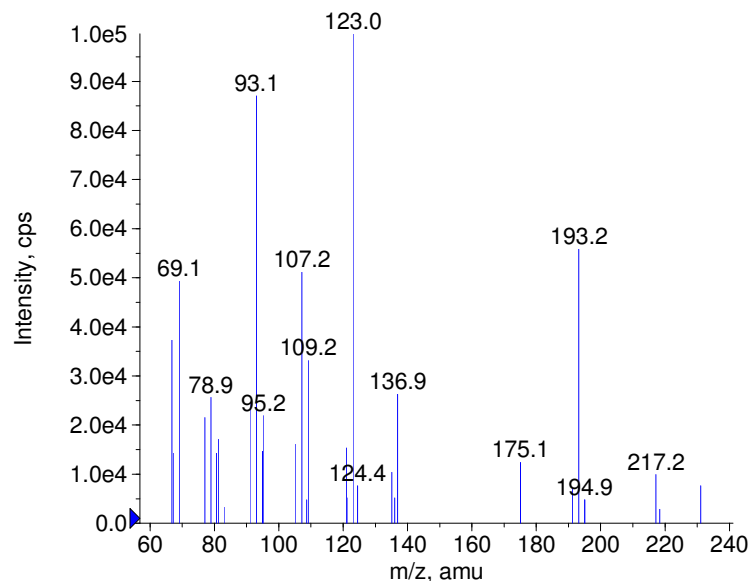
■ + THC Prec(315.0) CE(20.0) RT(4.0)



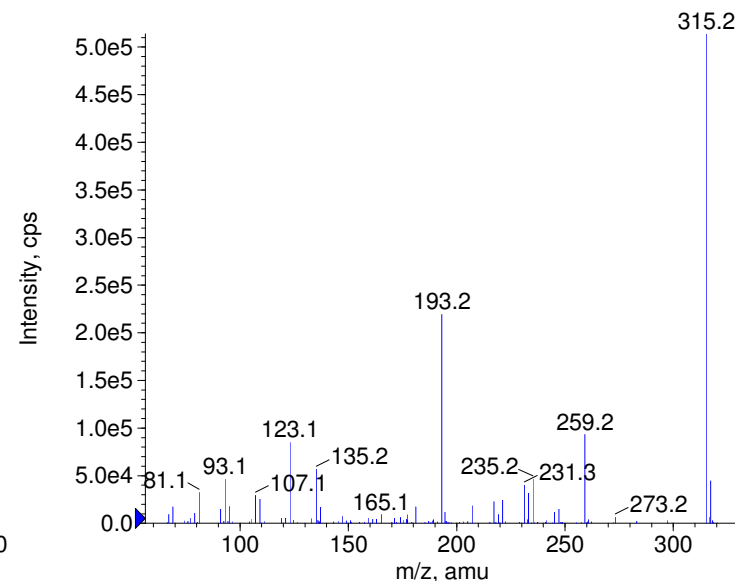
■ + THC Prec(315.0) CE(35.0) RT(4.0)



■ + THC Prec(315.0) CE(50.0) RT(4.0)



■ + THC Prec(315.0) CE(99.0) RT(4.0)



Instrument Model: QTrap
 Ion Source: Turbo Spray
 Polarity: Positive
 Scan Type: EPI
 1st Precursor m/z: 315.0000
 Collision Energy1(V): 20.0000
 Charge State1: 1
 CAD Gas Type:
 CAD Gas Value: Level 4
 Retention Time(min): 3.96
 Resolution: unit
 Comment2:
 Comment3:

© Copyright 2007 by
 W. Weinmann
 S. Dresen
www.chemicalsoft.de

“CE (99.0)”: CE spread 35+/-15 eV

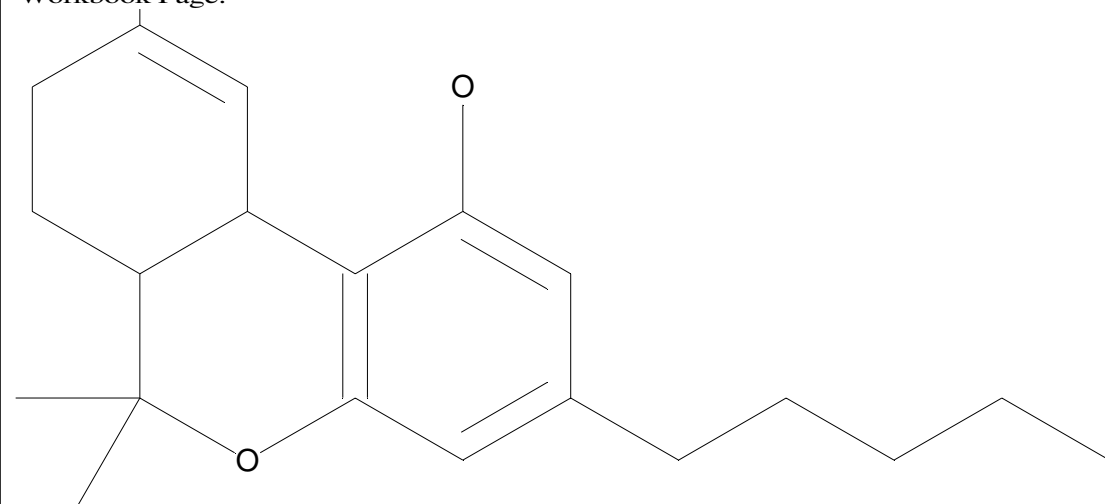
C21H30O2

Chemist Name:

Project Name:

Workbook Name:

Workbook Page:



© Copyright 2007 by
W. Weinmann
S. Dresen
www.chemicalsoft.de

“CE (99.0)“: CE spread 35+/-15 eV