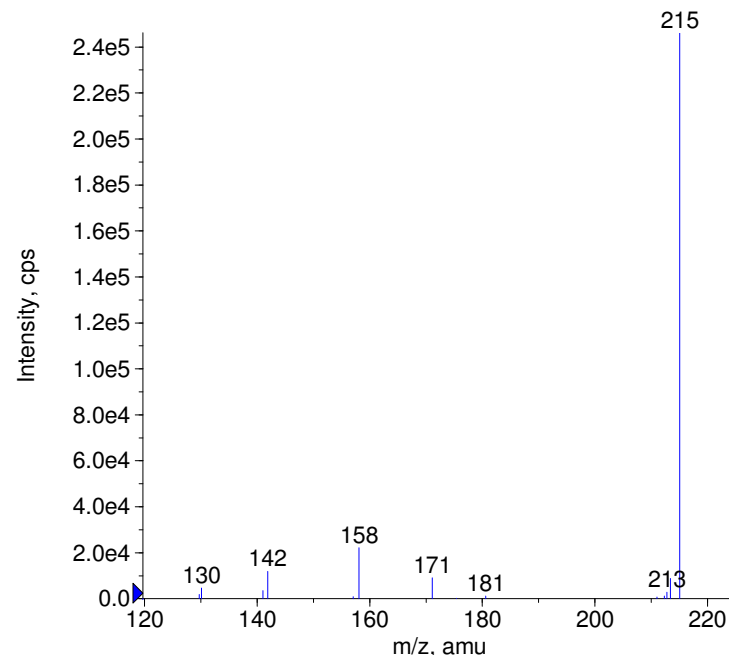


Compound Name: 8-Chlorotheophylline
 Synonyms:
 Formula: C7H7ClN4O2
 CAS Number: 85-18-7
 Molecular weight(amu): 214.0257
 Compound Class: analeptic
 Compound ID: C144
 User Value: 0.0000
 Keyword:
 Internal Standard: No
 Comment1:

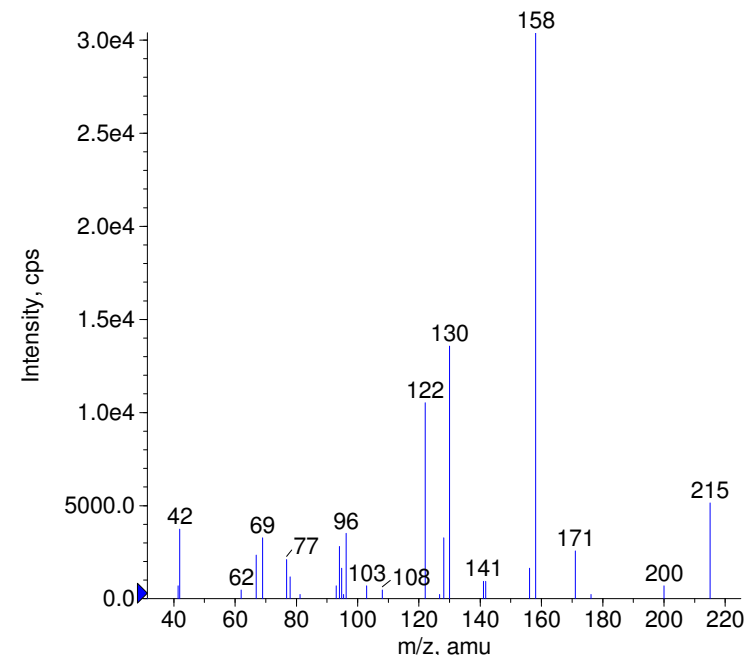
© Copyright 2004 by W. Weinmann

Instrument Model: API 365
 Ion Source: Turbo Spray
 Polarity: Positive
 Scan Type: MS2
 1st Precursor m/z: 215.0000
 Collision Energy1(V): 20.0000
 Charge State1: 1
 CAD Gas Type: N2
 CAD Gas Value: 4.0000
 Retention Time(min): 0.20
 Resolution: unit
 Comment2:
 Comment3:

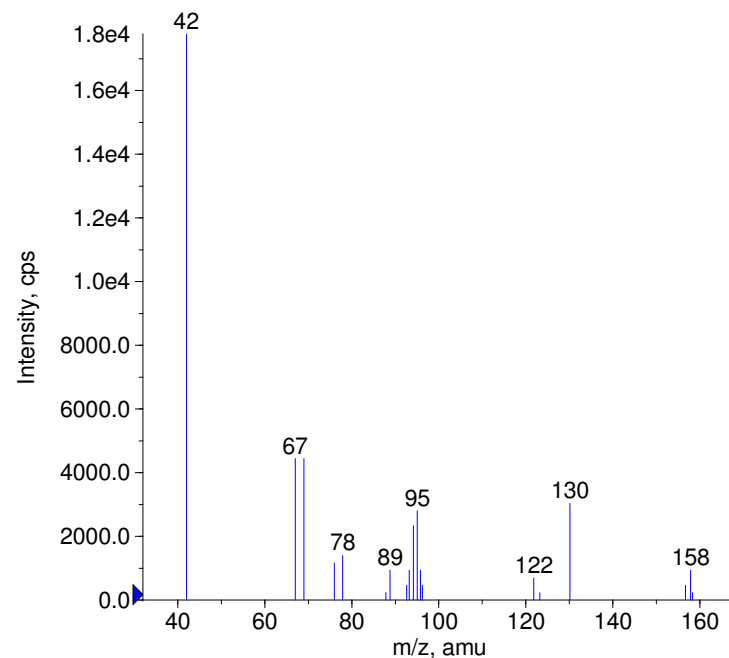
+ 8-Chlorotheophylline Prec(215.0) CE(20.0) RT(0.2)



+ 8-Chlorotheophylline Prec(215.0) CE(35.0) RT(0.2)



+ 8-Chlorotheophylline Prec(215.0) CE(50.0) RT(0.3)



+ 8-Chlorotheophylline Prec(0.0) CE(0.0) RT(0.3)

